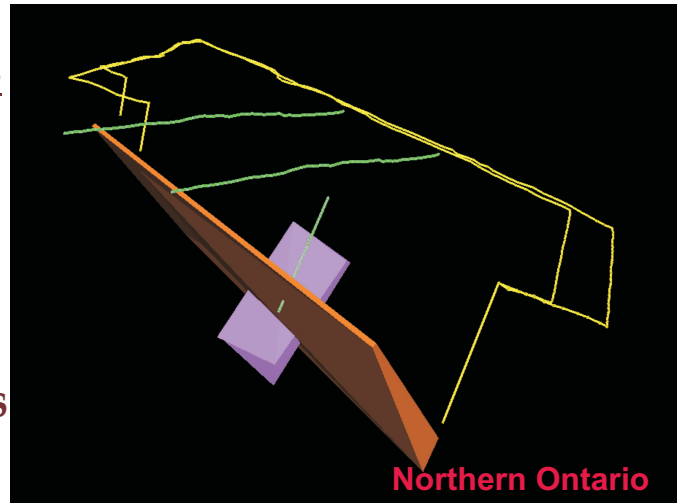
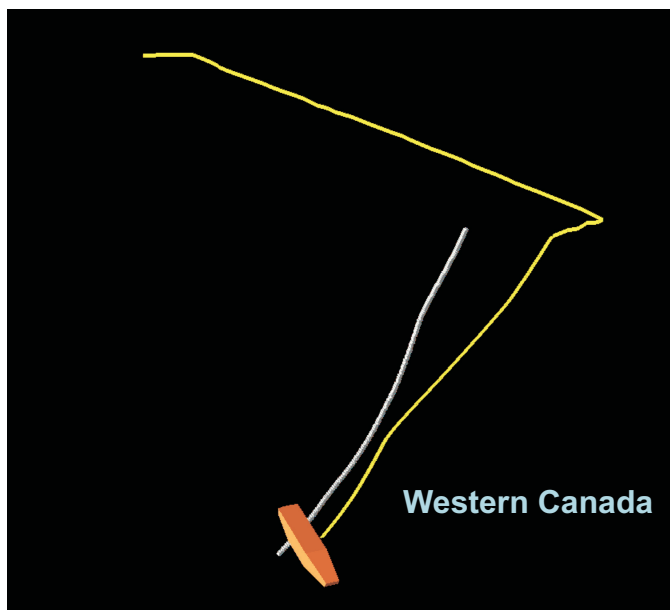


EMIGMA 9.5*For Vista/W7 /W8.1 and W10***Resistivity/ IP / MMR**
*ground , surface to borehole, crosshole***Surface and Borehole MMR Surveys**

DC and low frequency MMR
 Arbitrary Surface Grounded Source
 Surface and borehole measurements
 Merging of ground and borehole surveys
 Freespace and conducting background models
 Accurate Simulation of 3D source fields
 4 forward modeling algorithms
 Flexible plotting and data contouring
 3D visualization and survey design tools

**MMR Ground and Borehole Survey with Model****Surface to Borehole Spectral IP****Surface to Borehole****Cross-borehole IP****Resistivity and IP**

Surface electrode to borehole electrode sources
 TX/RX Inhole electrodes
 Conductive and Polarizable Backgrounds
 Accurate Simulation of 3D source fields
 Flexible plotting and data contouring
 3D visualization tools

**Processing, Imaging & Interpretation Suite
for Mining, Oil & Gas, Near Surface****Exploration, Environmental, UXO, Geotechnical, Delineation**

EMIGMA 9.5

XP/Vista/W7/W8.1/W10

Resistivity/ IP / MMR /MIP *ground , surface to borehole, crosshole*

Surface IP/Resistivity Surveys

Resistivity, IP , MMR, MIP data

Time Domain or Frequency Domain

Dipole-dipole, pole-dipole, pole-pole

- gradient, Schlumberger, Wenner

Fast and Accurate 2D/3D resistivity modeling

- arbitrary contrast and aspect ratios

Fast and Accurate Full-solution 3D IP modeling

- Cole-Cole IP characterization

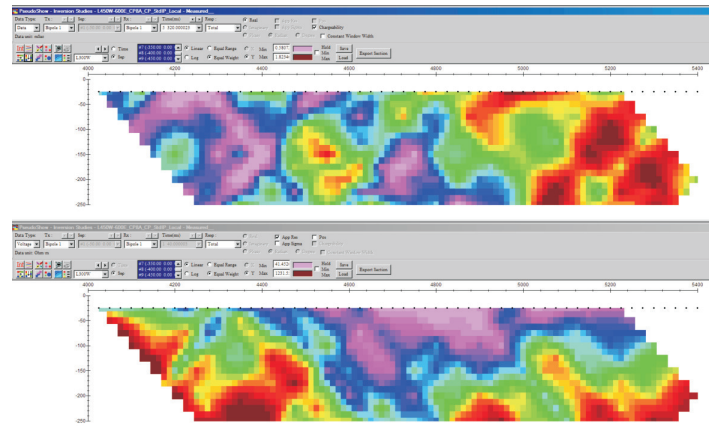
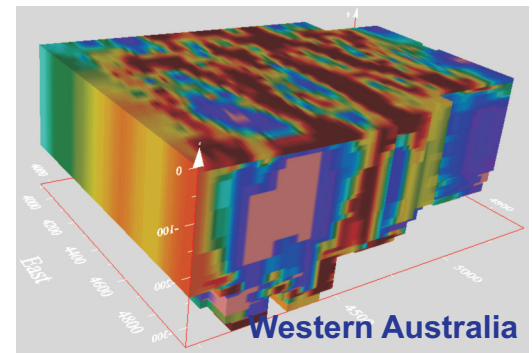
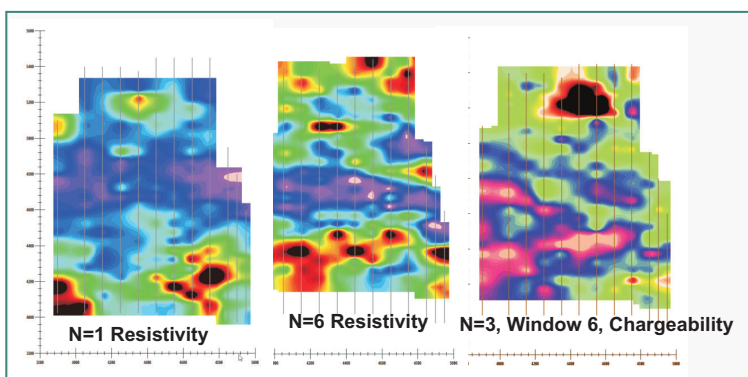
- including Magnetic and EM effects

- Unlimited bodies (prisms and/or polyhedra)

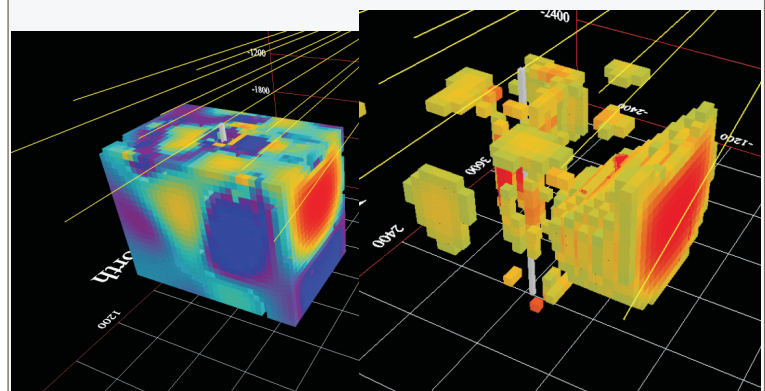
- Accurate multiple-body interactions for proper
current flow calculations

- Topography effects

1D & 3D Resistivity Inversions

**Apparent Rho and Chargeability****3D Resistivity Ground Survey**

Surface to Borehole Multiple TX and Boreholes



Processing, Imaging & Interpretation Suite
for Mining, Oil & Gas, Geotechnical
 Exploration, Environmental, UXO, Geotechnical, Delineation