

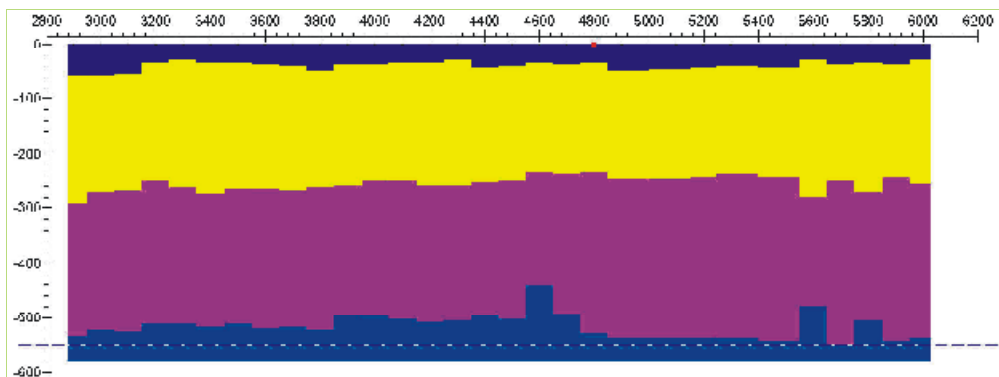


**GEOPHYSICAL CONSULTING SERVICES**  
[sales@petroseikon.com](mailto:sales@petroseikon.com)  
**1.905.796.0324**

### **Ground TEM Data Acquisition:**

Our years of experience in TEM data interpretation provide us with a unique insight into TEM survey techniques and instrument behaviour thus ensuring that we can provide the best quality data. This is combined with our ability to provide highly accurate and complete interpretation of that data. A Geonics digital Rx with re-vamped EM37 transmitter is available in-house.

### **Specializing in wide-offset, deep TEM**



### **Ground Magnetics and Gravity Data Acquisition**

We provide high quality, high-resolution ground magnetic surveys utilizing a GPS linked Cesium magnetometer with a base station utilizing a proton magnetometer. While, this may sound straightforward, many contractors do not provide knowledgeable operators able to properly distinguish instrument malfunctions not properly re-sample near targets of interest. We also provide precise ground gravity surveys in conjunction with a partner company with 20 years of experience in ground gravity. We have further developed the best commercial software for gravity corrections now available and offer extremely advanced techniques for terrain corrections.

### **Quality Control for EM, Gravity and Magnetics**

Combining many years of experience in data interpretation and analyses as well as an extensive understanding of the measuring equipment and together with our mathematical and geophysics expertise, we are able to provide a unique insight and understanding of your data quality. *On site data collection, supervision and QC provided.*

*Airborne, Ground and Borehole data*

## **Survey Design and Contracting**

We provide services to help you design an appropriate survey. We will find the appropriate survey contractor and help you negotiate a suitable contract and follow through to ensure you receive careful data collection services and receive the final data products in a timely manner.

*Airborne, Ground and Borehole data*

## **Data processing and Data Deliverables**

We can provide all the basic data processing and quality control on your data and deliver the required data products as well as the final processed data and maps.

*Airborne, Ground and Borehole data*

## **Processing Products**

***Magnetic and Gravity Corrections*** With the use of our exceptionally accurate and unique algorithms, we can provide accurate and sophisticated data corrections including all of the basic data corrections as well as enhanced gravity and magnetic corrections.

***Magnetic and Gravity Gradients:*** With the use of our specifically designed and accurate algorithms, we derive processed derivatives from total field data that are virtually indistinguishable from measured gradients and often significantly more accurate.

***Gridding:*** Extremely accurate, high resolution, local gridding techniques designed originally for satellite data but now available for airborne geophysics. *Why spend millions on a modern survey and use ancient tools for producing your maps?*

***Airborne Magnetic Processing:*** The most versatile and adjustable magnetic compensation software and the most general de-rotation for your measured gradients.

***Airborne EM Processing:*** Accurate decay analyses maps for all airborne TEM systems, accurate apparent resistivity and depth estimates for your airborne HEM data.

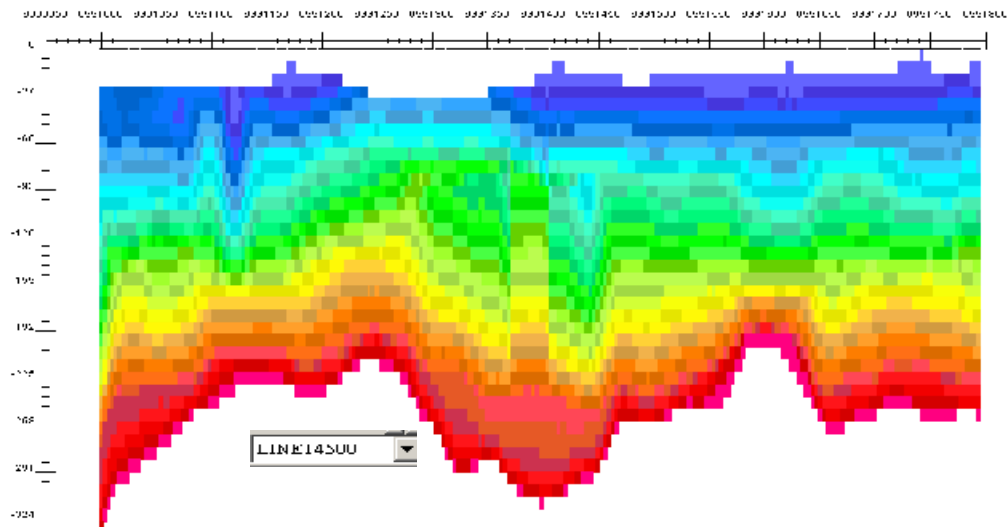
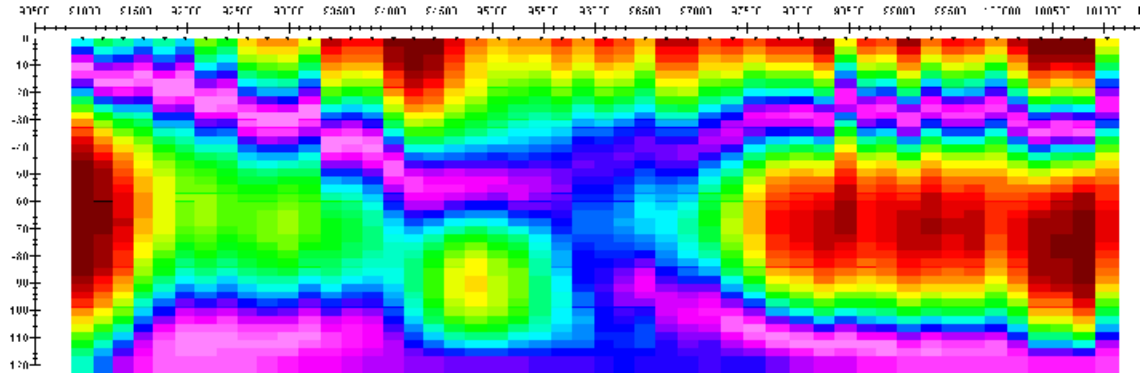
## **Inversion Products**

***Gravity and Magnetics:*** Three dimensional, detailed inversions including inversion of your gradient and vector data for either airborne or ground data or combinations.

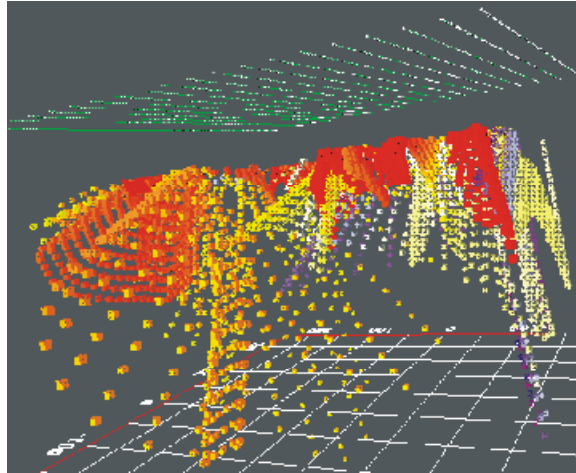
***Airborne Time-Domain:*** Extremely accurate, stacked, one-dimensional inversions for VTEM, MegaTEM, GeoTEM, HeliGeoTEM and AeroTEM

**Airborne and Ground Frequency-Domain:** Accurate, stacked, one-dimensional inversions or fast approximate conductivity depth-images. Towed helicopter or fixed wing systems.

**Ground Time-Domain EM:** Accurate one-dimensional inversions for either fixed or moving loop surveys. Use both your in-loop and out-of-loop data. Joint inversion of multiple offsets or multiple receiver orientations

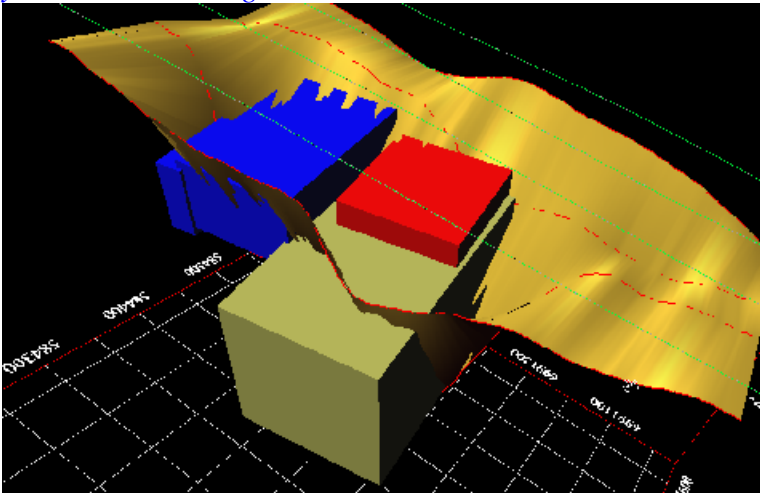


*3D Extended Euler Depths:* for gravity or magnetics using derived or measured derivatives. Ground or Airborne data.



### **3D Geophysical Models:**

*Before you drill, why not build an accurate 3D model of the geology from your geophysics? Having spent a significant amount on your data, why not spend a little more to help give you the best drilling results.*



*EM, Magnetic, Gravity, Resistivity or IP.*

*We provide integrated models for all of your data related to your exploration objectives.*

**[www.petroseikon.com](http://www.petroseikon.com)**