

PetRos Eikon Incorporated

10A Bram Court, Unit 10, Brampton, Ont., L6W 3R6 Canada, tel. +1 905 796 0324

www.petroseikon.com

PRICE LIST

All prices are in US funds - Valid until July 1, 2012

Prices are in Canadian funds for Canadian clients

Premium Exploration Packages

V8- Premium Series (full database platform for multiple surveys, unlimited survey size)

EMIGMA EM Premium for Oil and Gas <i>EM and Magnetics Applications for airborne, ground, marine and borehole surveys</i> <i>Natural fields and controlled source electromagnetics</i> <i>Including CSEM, MT/AMT, CSAMT, ZTEM, AFMAG, MTEM, TEM, FEM, IP, Resistivity</i>	\$13,000
EMIGMA for GRAVITY – Airborne, Ground, Borehole applications <i>Basic, FFT, 2D/3D modelling, 3D Inversion, Euler, Gravity Corrections</i>	\$3,500
EMIGMA for IP/RESISTIVITY - Ground, Borehole, Xhole applications <i>Basic, PseudoSections, 3D Inversion, 1D Inversion, 2D/3D modeling</i>	\$3,500
EMIGMA for FEM - Ground & Borehole <i>Basic, Modelling including 3D models, 1D Inversion , stacked 1D Inversion sections</i>	\$1,500
EMIGMA for TEM - Ground & Borehole <i>Basic, 3D Modelling, 1D Inversion including inloop and out-of-loop configurations</i>	\$3,000
EMIGMA for Magnetics – Airborne, Ground, Borehole <i>Basic, 2D FFT, 3D Inversions, Modelling, Euler solutions</i>	\$2,500
EMIGMA for MT/AMT, VLFR - Ground applications <i>Basic, Modelling including 2D/3D models, 1D Inversion , stacked 1D Inversion sections</i>	\$4,000
EMIGMA for CSAMT - Ground applications <i>Basic, Modelling including 2D/3D models, 1D Inversion , stacked 1D Inversion sections</i>	\$1,500
EMIGMA for Potential Fields – Airborne, Ground, Borehole <i>Combined gravity and magnetics package</i>	\$5,000
EMIGMA for Airborne FEM + TEM + Magnetics <i>Basic, with 3D Modelling, 1D inversion including offset Tx-Rx configurations.</i> <i>Includes ground applications for Airborne FEM and TEM,</i> <i>ground/airborne magnetics including 3D inversions</i>	\$6,000
EMIGMA for Airborne FEM + Magnetics <i>Basic, with Pseudo-Depth imaging, 1D inversion, 3D modeling.</i> <i>Includes ground applications for FEM, ground/airborne magnetics including 3D Inversion</i>	\$3,500
EMIGMA for Ground and Borehole applications <i>for Magnetics, FEM, TEM, Gravity, IP, Resistivity</i>	\$5,000
EMIGMA Complete – Airborne, Ground, Borehole <i>for Magnetics, FEM, TEM, Gravity, IP, Resistivity, CSAMT</i>	\$12,000

All above prices are in USD unless stated otherwise, and do not include any taxes, bank transfer charges, delivery costs, custom duties.

Training is available on request.

Please request the quotation.

**Represented
by:**

PRICE LIST

All prices are in US \$ - Valid until July 1, 2012
Prices are in Canadian funds for Canadian clients

Premium Package Add-Ons

<p>Marine Electromagnetics Add-On For CSEM, marine MT, MTEM and for simulation of general marine EM system configurations Available as add-on to EMIGMA Premium Complete or EMIGMA for Airborne FEM+TEM This add-on is included in the EM for Oil and Gas license</p>	\$3,000
<p>Airborne and Ground EM for Natural Fields Add-On For natural field applications such as MT/AMT, ZTEM and AFMAG and capacitive electric field measurements Available as add-on to EMIGMA Premium Complete or EMIGMA for Airborne FEM+TEM This add-on is included in the EM for Oil and Gas license</p>	\$3,000

Academic Packages

Some Academic Packages include QCTool

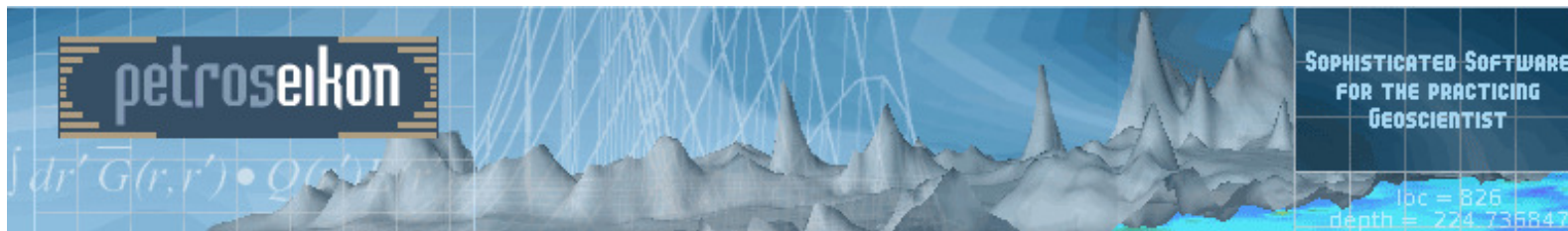
<p>EMIGMA for Academics – Ground Only FEM, TEM, Magnetics, Gravity and Resistivity, V8 Professional</p>	<p>\$2,500 \$6,000 for 3 licenses</p>
<p>EMIGMA Complete Premium Academic – Ground and Airborne Magnetics, Gravity, FEM, TEM, IP, Resistivity, CSAMT V8 Premium</p>	\$5,000
<p>EMIGMA Premium for Potential Fields – Ground, Borehole and Airborne Magnetics + Gravity, V8 Premium</p>	\$2,500
<p>GeoTutor IV - Educational License V6.x Basic – without Xhole Magnetics, Gravity, FEM, TDEM, IP, Resistivity, MT, CSAMT</p>	<p>\$2,500 for 5 licenses</p>

All above prices are in USD unless stated otherwise, and do not include any taxes, bank transfer charges, delivery costs, custom duties.

Training is available on request.

Please request the quotation.

**Represented
by:**



PRICE LIST

All prices are in US \$ - Valid until July 1, 2012.
Prices are in Canadian funds for Canadian clients

Near Surface Environmental and Geotechnical Packages

V8 Ground Applications- Professional Series – database framework, unlimited surveys per database with a maximum of 50,000 data points per survey.

EMIGMA for Near Surface - Magnetics , <i>V8 Professional</i>	\$1,000
EMIGMA for Near Surface – Resistivity, IP , <i>V8 Professional</i>	\$1,500
EMIGMA for Near Surface – Potential Fields - Ground surveys only <i>Magnetics + Gravity package, V8 Professional</i>	\$3,000
EMIGMA Near Surface Complete <i>IP/Resistivity, FEM, TEM, Magnetics, Gravity , V8 Professional</i>	\$5,000

GeoTutor IV V6.4 Basic Series for Ground, Airborne, Borehole and Xhole Modeling (maximum 4,000 data points per survey)

GeoTutor IV License – ground, airborne, borehole <i>Magnetics, Gravity, FEM, TEM, Resistivity, IP, MT and CSAMT , V6.x</i>	\$1,000
GeoTutor IV Crosshole Modeling License For magnetic coils and electric systems, grounded and ungrounded electric sources and receivers, normal mode helical antennae – one data import format included	\$3,000

All above prices are in USD unless stated otherwise, and do not include any taxes, bank transfer charges, delivery costs, custom duties.

Training is available on request.

Please request the quotation.

**Represented
by:**

PRICE LIST

Valid until July 1, 2012.

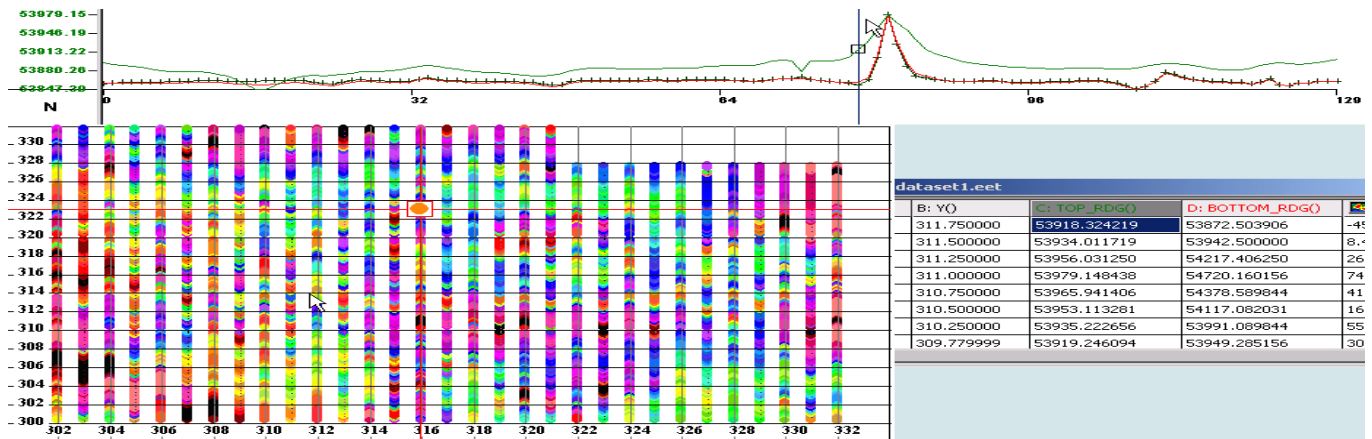
QCTool V2.3.0.0

QCTool V2.3.0.0 Standard

Data Quality Control, unlimited data points, greater than 500 channels, data linked spreadsheet, plotter, gridding, contouring, filters, GPS projections, gravity corrections, magnetic corrections including IGRF, derivative calculations

Aeromagnetic Compensation add-on available

Basic Price - \$300 CAD/license for more details refer to www.qc-tool.com



All above prices are in USD unless stated otherwise, and do not include any taxes, bank transfer charges, delivery costs, custom duties.

Training is available on request.

Please request the quotation.

Represented by: